

Imperial College  
London



The Institution of  
**StructuralEngineers**



A half-day workshop on:

# Design of Steel and Composite Buildings Against Progressive Collapse

Wednesday 1 June 2022

11:30 - 17:30

The Institution of Structural Engineers  
47-58 Bastwick Street, London EC1V 3PS

Structural robustness is a key safety consideration in the design of buildings for exceptional events. In recent years, extensive research has been carried out on the mitigation of progressive collapse in steel and composite steel/concrete buildings, leading to design approaches of different levels of complexity, some of which will be implemented within imminent revisions of design standards. This workshop introduces the technical background and practical recommendations based on a collaborative European dissemination project (Failnomore), which will be presented together with an open-access design manual and design examples. The workshop covers the design of buildings for identified and unidentified threats, and the examples include steel and composite steel/concrete structures in seismic and non-seismic regions.

The event is free to attend, but places need to be reserved online in advance at: [bit.ly/ROBUST22](https://bit.ly/ROBUST22). Each participant will receive a copy of the workshop material.

Limited places available, reserve your free place here: [bit.ly/ROBUST22](https://bit.ly/ROBUST22)

# Design of Steel and Composite Buildings Against Progressive Collapse

## PROGRAMME

11:30-12:30

Registration and Lunch

12:30-13:00

Welcome Address and Introduction

Prof. Ahmed Elghazouli, *Imperial College London*

13:00-13:30

Status of Structural Eurocodes and Background  
to Codified Robustness Design

Prof. David Nethercot, *Imperial College London*

13:30-14:30

Mitigating the Risk of Progressive Collapse under  
Exceptional Events - The FAILNOMORE Project

Prof. Jean-François Démonceau, *University of Liège*

14:30-15:00

Coffee Break

15:00-16:00

Overview of Design Procedures and Recommendations

Prof. Ahmed Elghazouli, *Imperial College London*

Eng. Zeyad Khalil, *Imperial College London*

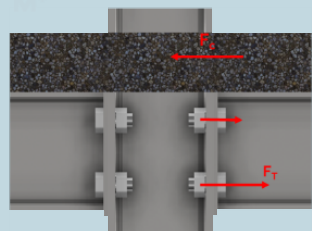
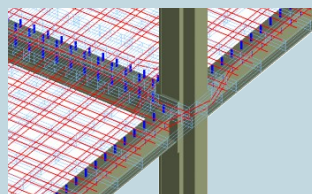
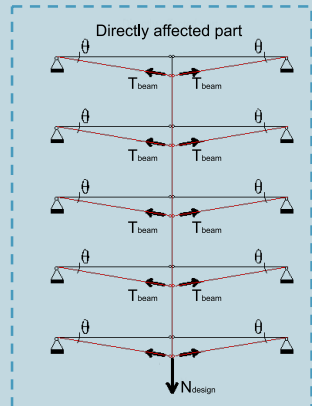
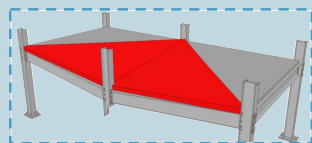
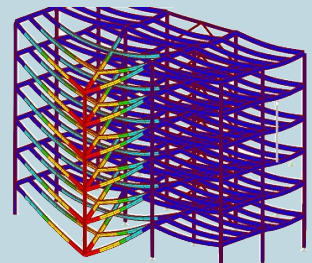
16:00-17:00

Design Examples for Steel and Composite Buildings

Prof. Florea Dinu, *University of Timișoara*

17:00-17:30

Workshop Closure



Reserve your free place here:  
[bit.ly/ROBUST22](https://bit.ly/ROBUST22)

Wednesday 1 June 2022 11:30 - 17:30  
The Institution of Structural Engineers  
47-58 Bastwick Street, London, EC1V 3PS, UK