



NEWSLETTER

N°2/04 April – June 2004

Editeur Responsable : G. GENDEBIEN

Avenue des Ombrages 32/20

B-1200 Brussels, Belgium

☎ +32-2/762.04.29 - 📠 +32-2/762.09.35

✉ eccs@steelconstruct.com – 🌐 www.steelconstruct.com

In this issue

- | | |
|--|-----------------------------|
| p. 1 Editorial | p. 6 News |
| p. 2 New publications | * From ECCS |
| p. 3 ECCS Annual General Meetings 2004 | * From external sources |
| p. 5 What about the Working Committees | p. 9 ECCS & External Events |
| p. 6 ECCS Committees Diary | p. 11 Events Calendar |
| | p. 13 People & Committees |

EDITORIAL



*By Bertrand Lemoine
Chairman of the ECCS
PMB*

Synergy between players in the steel construction market is vital for market development. Enhancing the position of steel in Europe and keeping it competitive is a continuous fight in which all efforts have

to be targeted the same direction.

The situation is of course different in all countries in Europe, especially regarding market shares, potential growth and steel culture among designers, construction firms, clients, and public authorities. But common initiatives can and must

be undertaken. This is the aim of the new Market Committees, which have been set up last year. They are now on their way, and members are invited to join to strengthen their potential of action.

Following the London meeting held last year in BCSA's office, I called for a Construction market development workshop which was organised by the MC5 committee chaired by Jo Naessens and hosted in Paris by the Syndicat de la Construction Métallique de France, and his General Secretary Jean-Louis Gauliard. Nine countries were represented to share experience in national market development and best practice regarding marketing tools, together with IPO's such as OTUA, CIA and future organisations in Spain and Italy. This meeting has been successful and will help strengthen initiatives for collective ECCS action.

Focus will be put in the future on a selected range of marketing tools, to consolidate the position of constructional steelwork, in a situation where the competitiveness of steel has to be even more



promoted. Support of the steelmakers will be needed to reinforce the action of members and various organisations dedicated to steel promotion

in Europe.

Bertrand Lemoine

Chairman of the Promotion Management Board (PMB)

New Publications

External Publications

1- ISFSSS - INTERNATIONALES BRANDSCHUTZ-SYMPIOSIUM FÜR STAHLBAUTEN

2003' Cologne ISFSSS, 11-12 September 2003

Fire

Bauen Mit Stahl / University of Hanover, Institute for Steel Construction

Einwirkungen auf Tragwerke im Brandfall – EC 1

Freie Wahl zwischen ISO-Brand und Naturbrand

Actions on Structures exposed to Fire – EC 1 Free Choice between ISO-Fire and Natural Fire

Jean-Baptiste Schleich, Ingénieur Principal, ARCELOR-BCS 1, Luxembourg, Professor / University of Liège.

We give you hereafter a short summary of the publication.

Summary

Regarding mechanical actions, it is commonly agreed that the probability of the combined occurrence of a fire in a building and an extremely high level of mechanical loads is very small. In fact the load level to be used to check the fire resistance of elements refers to other safety factors than those used for normal design of

buildings. The general formula proposed to calculate the relevant effects of actions allows reducing variable actions through the so-called combination factors Ψ_1 and Ψ_2 , which according to the Eurocode EN1990 (DA V 24.4.2002) are always smaller than unity.

The accidental action, given by the effect of the fire, is represented by the temperature effect on the material properties and the indirect thermal actions. Those are created, either by deformations and expansions caused by the temperature increase in the structural elements, where as a consequence internal forces and moments may be initiated, P- $\dot{\Delta}$ effect included, either by thermal gradients in cross-sections leading to internal stresses.

Concerning thermal actions, a distinction is made in the Eurocode EN 1991-1-2 (DA V 20.11.2002) between nominal heating curves and natural fire models. Nominal fires are conventional fires , which can be expressed by a simple formula, and which are assumed to be identical whatever is the size or the design of the building. Nominal fires are mainly the standard fire ISO-834, the hydrocarbon fire reaching a constant temperature of 1100°C after 30 min, and the external fire reaching a constant temperature of 680°C after 30 min. They have to be used in order to prove that an element has the required level of fire resistance to fulfil national or other requirements expressed in terms of fire rating related to one of these nominal fires.

The aspect of the evolution of a natural fire has been studied through simple calculation models like parametric temperature-time curves, two-zone fire models, or more advanced calculation



models like multi-zone fire models or computational fluid dynamics, CFD models. The European Research on the Natural Fire Safety Concept allowed analysing natural fire models based on more than 100 new natural fire tests, consequently permitting to consider natural fire models in the Eurocode EN 1991-1-2.

Furthermore, these natural fire models allow, through the design fire load, to consider the beneficial effect of the active fire safety measures i.e. by safe escape ways, proper smoke venting or by conveniently designed & maintained sprinkler systems. Of course also the danger of fire activation shall be taken into account. This procedure, the so-called Global Fire Safety Concept, produces real safety for people and at the same time permits to guarantee the required structural fire resistance in real live.

Concerning the fire resistance of structural or load bearing elements, design rules are given in the Eurocode EN1992-1-2 for concrete structures, in the Eurocode EN1993-1-2 for steel structures and in the Eurocode EN1994-1-2 for composite structures. It should be underlined that advanced calculation models give an improved approximation of the real structural behaviour under fire allowing vital information on temperature fields, strain and stresses inside structural elements as well as producing credible data on the deformation history of a structure under heating.

For order, please contact Mr. Schleich:
jbschlei@pt.lu

ECCS ANNUAL MEETINGS 2004

Ljubljana, Slovenia

Hotel Union, 08-10 September 2004

TIMETABLE OF THE MEETINGS

- 08 September 2004:** * International symposium
“Composite steel and concrete structures / State of the art and the new developments”
- 09 September 2004:** * Technical Meeting
* Market Development & Promotion Session
* ECCS Annual Dinner
- 10 September 2004:** * Executive Board meeting
* ECCS Annual General Meeting

SYMPOSIUM: COMPOSITE STEEL AND CONCRETE STRUCTURES – STATE-OF-THE-ART AND NEW DEVELOPMENTS

The Annual Meeting of the various ECCS Committees will be preceded by the conference on “Composite Steel and Concrete Structures – State-of-the-art and New Developments. This conference is organised jointly by the Slovenian Steel Construction Association and the University of Ljubljana, Faculty of Civil and Geodetic Engineering, chaired by Prof. Darko Beg.

The main purpose of the symposium is to present modern concepts of design of composite structures, new developments in this field, and to



encourage wider use of composite structures in Slovenia.

The scope of the symposium is :

- Design and Construction of composite buildings and bridges – State-of-the-art;
- New Development;
- Eurocode 4
- Competitiveness of composite structures.

The Symposium will take place at the Chamber of Commerce and Industry of Slovenia, Dimičeva 13, SI-1000 Ljubljana, Slovenia.

Here is the programme of the Symposium:

09.00 – 09.15	Opening of the Symposium
09.15 – 09.30	Composite structures in Slovenia – D. Beg (Slovenia)
09.30 – 10.15	Eurocode 4 and composite bridges in France – J. Raoul (France)
10.15 – 11.00	Composite bridges in Germany – G. Sedlacek (Germany)
11.00 – 11.15	Coffee break
11.15 – 12.00	Composite floors in Scandinavia – M. Leskela (Finland)
12.00 – 12.45	Composite floors for buildings in the U.K. – G. Couchman (U.K.)
12.45 – 14.15	Lunch
14.15 – 16.00	Round-table discussion on comparative advantages and competitiveness of composite structures

Posters visit in the lobby (in front of the lecture room): 09.00 – 16.00

INFORMATION ON SLOVENIA



Area: 20.273 km²

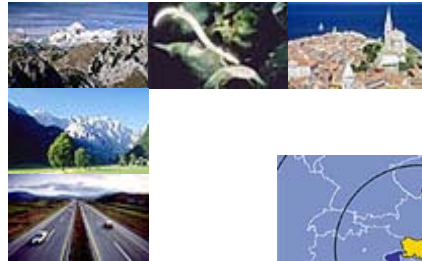
Population: 1.976.290

Language: Slovene

Currency: Tolar (SIT)

GDP per capita (1999): 10.078 USD

Slovenia in Brief



The Republic of Slovenia lies at the heart of Europe where the Alps and the Mediterranean meet the Pannonian plains and the mysterious Karst. Slovenia has a population of 2 million and its capital city is Ljubljana. The official language is Slovene, one of the South Slavonic languages.

In Slovenia, the sun shines approximately 2000 hours per year. And yes, there is plenty of snow in winter.

As a small, beautiful and picturesque country, Slovenia makes a great tourist destination. Mountains, lakes, waterfalls, forests, caves, hills, plains, rivers and the sea - you name it, you can find it all within a modest 20.273 km² (half the size of Switzerland), as well as many natural and landscape parks. You can ski in the morning and surrender yourself to the luxury of the Adriatic Sea in the afternoon.

Slovenia has 46.6 km of sea coast - an inch per inhabitant.

The highest mountain is called Triglav - the name meaning "three-heads" - and it is 2864m high. The mountain is a true national symbol, featured on the national [coat of arms and the flag](#).





Slovenia is also known for its great wines and delicious traditional food.

The currency is called the [Slovenian Tolar \(SIT\)](#). It is very easy to get here as the country is connected with the rest of the world by a modern [highway network](#), [railway system](#), [international airport](#) and [ports](#).

© Government Public Relations and Media Office, 1997-2004

INTRODUCTION OF OUR HOST: IMK

Institute of Metal Constructions

The Institute for Metal Constructions (IMK) has been a leading Slovenian institution of experts in the field of metal constructions research and development since its foundation. In this period the institute has participated in the construction and maintenance of all of the most important domestic power plants and industrial facilities, road and railway bridges, television and telecommunication tower, facilities for work, sports, leisure and other metal structures.



The activities of the institute include: research in the field of structural and fracture mechanics and material science; design of high buildings, steel bridges, electric towers, cranes, pressure vessels and other metallic structures; controlling and assuring quality during production and installation of structures; advising and quality assurance in power plants; safety assurance in the field of nuclear technology; static and dynamic mechanical testing of metals, metallographic and fractographic

investigations, investigations of welding quality and non-destructive investigations of structures.

The institute has been authorized for: testing and certifying bolts and bolted joints for supporting structures; assuring safety and quality in the nuclear technology field; conducting investigation of hazardous substance and crude oil derivate storage; testing metal materials and structures from the Croatian Register of Shipping and the Lloyd's Register of Shipping. The laboratory of the Institute has been accredited according to SIST EN ISO/IEC 17025 by Slovenian Accreditation (SA). The scope of accreditation can be found in the Annex to the Accreditation Certificate [L-016](#). Institute has been certified by TUV according to SIST ISO 9001.

Institute of Metal Constructions

Mencingerjeva 7, p.p. 3410, 1001 Ljubljana, Slovenia

tel.: ++386/1/2802 100

fax.: ++386/1/2802 151

E-Mail: info@imk.si

Director: **mag. Ārtomir Remec**

tel.: ++386/1/2802 102

IMK engineering

design, consulting and engineering

Information on Slovenia:

<http://www.ijs.si/slo/ljubljana/>

<http://www.ljubljana.si/generalinformation/index.html>

http://www.creativ.si/wts/engine/book.exe?lg=0&doc=4_5_1.htm

<http://www.ljubljana.si/>

<http://www.burger.si/Ljubljana/Ljubljana.htm>



WHAT ABOUT THE WORKING COMMITTEES?

1- Meeting of the TC 7

The Technical Committee 7 – Cold-formed thin-walled sheet steel in buildings, chaired by Mr. T. Tomà, held its 43rd meeting on 04 June 2004, at the

University of Karlsruhe, Germany. The members will hold their next annual meeting in Barcelona, Spain, on 09-10 May 2005.

The minutes of the meeting are available on the web site.



2- Meeting of the TC 10

The TC 10 held its 86th meeting in Amsterdam, The Netherlands, on 02 June 2004. This meeting was well attended. The members already fixed the dates of their next meeting: 11-12 November 2004 in

Liège, Belgium, and 21-22 April 2005 in Larvik, Norway.

The minutes of this meeting is available on the web site.



ECCS COMMITTEES DIARY

2004

Sept.	MC 5	01/09/04	Brussels	Oct.	TC3 Edit.	9/10/04	Luxembourg
	TC6	08/09/04	Ljubljana		Twg. 8.4	21/10/04	Karlsruhe
	ECCS Confer.	8-10/09/04	Ljubljana		PMB	21/10/04	Rotterdam
	Technical Meeting	09/09/04	Ljubljana		MC 3	29/10/04	Portugal
	Market Session	09/09/04	Ljubljana				
Executive Board	AGM	10/09/04	Ljubljana	Nov.	TC 10	11-12/11/04	Liège
					Liaison Comm.	18-19/11/04	Zürich
					TC 8	27/11/04	London



NEWS

ECCS

ECCS STEEL CONSTRUCTION MARKET DEVELOPMENT WORKSHOP, PARIS

On 11 May 2004, in Paris, the ECCS held a workshop on the Steel Construction Market Development. This event was hosted by its French member, the "Syndicat de la Construction Métallique de France" (SCMF).

The ECCS wanted to exchange with its members and partners their point of view on how to boost the steel construction market share.

The objectives of the seminar was as follows:

- More and better steel in construction
- Create a win-win situation
- Learn from each other
- Exchange information on projects
- Increase productivity
- Think global, act local
- IPO's invited to share experience and projects
- Importance of maintaining a common network

Each members and partners reviewed its marketing tools according to the following scheme:

- Publications
- Internet
- Commercial fairs
- Symposium - National Steel Day
- Awards
- Education
- Study Trips
- Software
- +...

Our partner, ARCELOR, represented by Mrs. Sylvie Pétetin, presented its position on IPO's.

Some remarks have been done concerning the improving of the market tools in order to reach our goal: the development of the steel construction market share.

Ideas for the future have been put forward:



- 1- Better efficiency;
- 2- Common initiatives;
- 3- Market oriented approach;
- 4- Work on long term.

This seminar was well attended and very fruitful. The Chairman of the Executive Board as well as the Secretary General thanks the French Association SCMF for this well organised and successful event.

A compilation of the Workshop on a CD-ROM can be obtained at the Secretariat General (eccs@steelconstruct.com) free of charges.

ECCS/AISC WORKSHOP - CONNECTIONS IN STEEL STRUCTURES V: INNOVATIVE STEEL CONNECTIONS

The ECCS TC 10 Working Committee held, jointly with the AISC (the American Institute of Steel Construction), a workshop on 3-5 June 2004,

in Amsterdam, The Netherlands, hosted by the Dutch Information and Promotion Office "Bouwen met Staal". The theme of this Workshop was "Connection in Steel Structures V: Innovative Steel Connections".

This Workshop was well attended and the subjects dealt with of great interest. We will publish the excerpts of the proceedings in the next Newsletter.

WELCOME TO THE STEEL INFORMATION AND PROMOTION OFFICES !

From now on, European Steel Information and Promotion Offices (IPOs) become members of the ECCS. The IPO's concerned are Staalinfoocentrum-Centre Information Acier (CIA) (Belgique), l'Office Technique pour l'Utilisation de l'Acier (OTUA) (France) et

EXTERNAL SOURCES

FROM OUR MEMBERS OR ASSOCIATES

ASCEM

Our Spanish member, ASCEM, has a new President. Mr. Johan Delriu Real was appointed President to succeed to Mr. Joan Josep Juanola Oller. Mr. J. Delriu Real took office in April 2004.

We extend our thanks to Mr. Juanola Oller for his contribution to the ECCS works, and we welcome Mr. J. Delriu Real.

Mr. Joan Delriu Real was born in Barcelona, year 1950.

He is Technical Architect at the University of Barcelona and Project Manager in Construction and Urbanism.

In 1976, he founded the company "Construcciones Metálicas Industriales y Civiles, S.A. (COMICSA)", which is dedicated to the design, manufacture and assembly of metallic structures for civil as well as for industrial works.

It was charter member in 1999 of the "Asociación para la Construcción de Estructuras Metálicas" (ASCEM), acting as Vice-president.

From March of the 2004, he has been elected President at the General Assembly celebrated in Madrid.

JSSC

We take this opportunity to thank Mr. Takuhiro Konno, Executive Counsellor of the Japanese Society of Steel Construction (JSSC), who served the ECCS for a long period of time.



Mr. T. Konno is terminating his function this month, and his successor is Mr. K. Keira whose functions will be of Secretary General and Executive Director of the company.

Mr. T. Konno who has served the JSSC since 1989, assuming the duties of Secretary General, Secretary General & Executive Director, and Executive Counsellor during the last year.

We want to express our gratitude to Mr. T. Konno for his contribution to the works of the ECCS. We wish him all the best for his new function, and welcome Mr. K. Keira .

ARCELOR Sections Commercial S.A.



SECTIONS

The Arcelor Long Carbon Sector has decided to organise itself by product line in order to be more reactive to the requirements of its customers and markets.

Therefore, a new department has been created on 1 April 2004 : "Arcelor Sections Commercial". This department will be responsible for sales, logistics, marketing and the development of new products and services to satisfy customer requirements. It will market the products of Arcelor Sections, i.e. beams, channels and heavy merchant bars.

ARCELOR Sections Commercial S.A.
Rue du Luxembourg, 66
L-4221 ESCH-sur-ALZETTE
Tel.: +352/531 31
Fax : +352/5313 3089

FROM OUTSIDE

EUROPEAN COMMISSION

Coal and Steel Research

**Launch of the Steel Technology Platform - 12
March 2004**

The Treaty establishing the European Coal and Steel Community (ECSC) expired 23 July 2002. The ECSC funds were transferred to the European Community to create a common fund dedicated for research in the coal and steel area.

The reserves are used for a new research programme, 'Research Programme of the Research Fund for Coal and Steel'. The programme is managed by DG Research according to principles similar to those applied for the existing ECSC RTD taking the new guidelines into consideration.

With the launch of the new programme an open and continuous call for proposals for coal and steel research projects has been opened, with 15 September of each year being the cut-off date for the submission of proposals for evaluation, starting in 2002.

The European Commission, downloadable from this web site, makes available the preliminary information package necessary for participating in the calls. The Information Package covers both Coal and Steel RTD. A hard-copy version of the Information Package will be produced in the near future.

Excerpt from Cordis

For more information, please visit the following web site:

For your information, you can find the report of the group of personalities, "European Steel Technology Platform, vision 2030, at the following address: ftp://ftp.cordis.lu/pub/coal-steel-rtd/docs/steel_stp_def_en.pdf

For more information, you can visit the site of Cordis: www.cordis.lu/coal-steel-rtd

CTICM & TNO

EFFECTIS

CTICM and TNO create EFFECTIS to join their activities in the field of fire safety

In view of the new common standards to be applied in all countries of the European Union,



CTICM (*Official Fire Laboratory and Centre for Fire Research in France – Agreement from the French Ministry of Interior*) and TNO (*Fire Laboratory and Centre for Fire Research in The Netherlands – Agreement from the Dutch Ministry of Housing and Environment*) decided to join their activities in the field of fire safety. To offer their clients a wider range of services, CTICM and TNO have created a joint venture : EFECTIS.

Through this new company, CTICM and TNO will offer adapted solutions in the field of :

- Fire Safety Engineering;
- Resistance to fire tests;
- Reaction of fire tests;
- Certification (CE marking);
- Expert Judgements.

EFECTIS has its seat in France, at Saint-Rémy-lès-Chevreuse.

For more information, you can contact Mr Eric Letot, Business Manager of Efectis, or your contact at CTICM or TNO.

EFECTIS
Domaine de Saint-Paul
102 route de Limours
F-78470 SAINT-REMY-lès-CHEVREUSE

Tel. : +33-(0)1/30 85 20 92
Fax : +33-(0)1/3085 25 30
E-mail : efectis@efectis.com or
eric.letot@efectis.com
Web : www.efectis.com

ECCS & EXTERNAL EVENTS



2004

➤ **IASS 2004 – shell and Spatial Structures from Models to Realization**

20-24 September 2004, Montpellier, France

Venue:

The Symposium will be held at The Corum, Palais des Congrès, in the heart of Montpellier.

Objectives:

This Symposium aims to provide a forum for presentation of models in the field of Shell and Spatial Structures. These models can be analytic, numerical, experimental ...Realization is the last model. They can be associated to design, mechanics, morphology, materials and construction. Researchers, engineers, architects and builders are invited to exchange their achievements and experience on topics related with shell and spatial structures. Presentation of models and design processes in other fields are also welcome.

For more information, please visit the web site www.IASS2004.org

Information:

Professor René Motro
Laboratoire de Mécanique et Génie Civil
Université Montpellier II, case courrier 048
Place E. Bataillon
F-34095 Montpellier Cedex 5, France
E-mail : motro@lmgc.univ-montp2.fr

➤ **Staalbouwdag 2004 – Journée Construction Acier 2004**

22 November 2004, Brussels, Belgium

Auditorium 2000, Heysel, Brussels
Staalinfocentrum – Centre Information Acier
www.infosteel.be

Information:

CIA
Bruno Dursin or Maria de Samblanc
Rue Stassart, 36, B-1050 Brussels
Phone:+32-2/509 15 01 or 509 15 07
E-mail : info@infosteel.be
Web: www.infosteel.be



➤ **9th International Architecture Exhibition - Metamorph**

12 Sept. to 07 Nov. 2004, Venice, Italy

The 9th International Architecture Exhibition METAMORPH, directed by Kurt W. Forster, will take place September 12 to November 7. Conference open to any paying delegate.

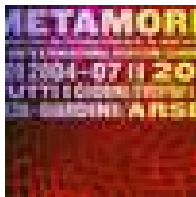
Venice, Arsenale - Giardini della Biennale
from 12 September to 7 November 2004

Vernissage:

9 September from 10 a.m. to 8 p.m.
10 - 11 September from 10 a.m. to 10 p.m.

Official Opening : 10 September

Public Opening : 12 September



The Fondazione **La Biennale di Venezia** announces the **9th International Architecture Exhibition METAMORPH** directed by **Kurt W. Forster**.

The Biennale di Venezia's 9th International Architecture Exhibition, METAMORPH, will explore the fundamental changes under way in contemporary architecture, both in the theoretical and practical design field, and in the use of new building technologies.

The layout of the METAMORPH exhibition hypothesises the visitor as a witness of these changes which, avoiding the traditional perspectives of interpretation, justify in an increasingly evident manner an open, innovative comparison with the evolution of the living organisms and their capacity for transformation.

Architecture today is required to show new commitment and has broadened its range of

disciplines in a significant manner. Its new role is that of catalysing great social and cultural experiences on an international scale; experiences, which are above all revealed in the modifications to urban, structures and landscape. Architectural space is thus seen in terms of its capacity to live today's changes; the new materials receive and stress atmospheric effects, and the perception of architecture opens itself to a dynamic conception of time. Public life in the buildings takes on characters that are more centred upon the evolution of the setting.

Thanks to research into materials possessing variable, reactive qualities, much architecture is changing its nature. It assumes curvilinear forms and draws the functions of their shells closer to those of living membranes. There are already many architects who seek to confer organic qualities upon their constructions, no longer in metaphoric terms, but in metabolic ones. Today, architecture becomes liveable only when it establishes its limits and conditions its interiors in just the same way as the primary components of life, cells. These produce a membrane to show themselves as organisms and stay alive. This new morphology of living spaces is definitively taking over "the era of Vitruvian architecture", and so opening new scenarios of research and construction of spaces for today's world.

For more information, please visit the web site www.labiennale.org

For further information



Flavia Fossa Margutti, Press Office Manager
La Biennale di Venezia, Ca' Giustinian, San Marco
I-30124 Venice
Tel. : +39 041 5218846/716
Fax: +39 041 2411407
E-mail: flavia.fossamargutti@labiennale.org
Web: www.labiennale.org

**ECCS & External Events Calendar****2004**

Date	Event	Location
7-9 June 2004	« NSCC 2004 » - Nordic Steel Construction Conference Danish Steel Institute www.steelinfo.dk	Radisson SAS Scandinavia Hotel, Copenhagen, Denmark
16-18 June 2004	“ConstruMetal 2004” – Feira e Symposio Internacional da Construcao Metalica ABCEN (Associação Brasileira da Construcao Metalica) www.construmetal.com.br	Transamerica Expo Center, Sao Paulo, SP, Brazil
17-19 June 2004	5 th International Phd Symposium in Civil Engineering TU Delft www.phdce5.nl	Aula Congrescentrum, Technical University of Delft, The Netherlands
23-25 June 2004	2004 International Symposium on Steel bridge OTUA www.otua.org/congres	Office de tourisme de Millau, Millau, France
18-23 July 2004	Composite Construction in Steel and Concrete V Engineering Conferences International & United Engineering Foundation www.engconfintl.org	The Kruger National Park Conference Centre, Bergend-Dal, Mpumalanga, South Africa
2-4 Sept. 2004	2 nd International Conference on Steel & Composite Structures (<i>ICSCS' 04</i>) Korea Advanced Institute of Science & Technology http://icscs04.kaist.ac.kr	Sheraton Walker Hill Hotel, Seoul, Korea
2-4 Sept. 2004	The 3 rd International Conference on Advances in Structural Engineering and Mechanics (<i>ASEM' 04</i>) Korea Advanced Institute of Science & Technology http://icscs04.kaist.ac.kr	Sheraton Walker Hill Hotel, Seoul, Korea
8 Sept. 2004	International symposium “Composite steel and concrete structures / State of the art and the new developments” ECCS - IMK	Hotel Union, Ljubljana, Slovenia
9-10 Sept. 2004	ECCS Annual General Meetings ECCS www.steelconstruct.com	Ljubljana, Slovenia



2004 - Continuation

Date	Event	Location
12 Sept. to 7 Nov. 2004 	9 th International Architecture Exhibition – Metamorph La Biennale di Venezia www.labiennale.org	Venice, Italy
20-24 Sept. 2004	IASS 2004 – International Association for Shell and Spatial Structures Shell and Spatial Structures from Models to Realization www.IASS2004.org	Montpellier, France
22-24 Sept. 2004	IABSE Symposium on Metropolitan Habitats and Infrastructure Chinese Group of IABSE www.iabse2004.org.cn	Shanghai, China
14-15 Oct. 2004	E-CORE Conference “B4E” ECCREDI & E-CORE www.advancedfair.com	Maastricht, The Netherlands
22 November 2004 	Staalbouwdag 2004 – Journée Construction Acier 2004 Staalinfocentrum – Centre Information Acier www.infosteel.be	Auditorium 200, Heysel, Brussels, Belgium

2005

Date	Event	Location
08-10 June 2005	EUROSTEEL 2005 MAASRICHT Université de Liège (Belgium), Rheinisch-Westfälische Technische Hochschule Aachen (Germany, Technische Universiteit Eindhoven (The Netherlands)) www.eurosteel2005.info	Maastricht, The Netherlands
14-16 Sept. 2005	IABSE 2005 Symposium IABSE www.iabse.org	Lisbon, Portugal
20-23 Sept. 2005	ECCS 50th Anniversary – Annual General Meetings ECCS www.steelconstruct.com	Nice, France



People & Committees

Please note the following changes:

People

Changes in the National Associations:

* **Japan:** *Mr. Takubiro Konno*, from JSSC, the Japanese association of steel constructors, retired since 1st March 2004. His office has been taken over by *Mr. Kobichiro Keira*.

JSSC
Mr. K. Keira
k.keira@jssc.or.jp

* **Finland:** The contact data of the Finnish Constructional Steelwork Association have changed. New data are as follows:

Finnish Constructional Steelwork Association
P.O. Box 381
(Street address : Unioninkatu 14)
FI-00131 HELSINKI
Tel: + 358-9/ 12991

Fax: + 358-9/ 1299 214

E-mail : mirva.jokinen@rakennusteollisuus.fi

Web : www.terasrakenneyhdistys.fi

* **Spain:** *Mr. Joan Juanola Oller*, from ASCEM, the Dutch association of steel constructors, left office, and his duties have been taken over by *Mr. Joan Delriu Real*.

ASCEM
Mr. J. Delriu Real
jdelriu@comicsa.es

Committees

* **MC 1 & MC 2 :** *Mr. Ralph Hamerlinck* became corresponding member of both MC 1 – Multi-Storey Buildings/High rise residential and MC 2- Sustainability. Welcome to Mr. Hamerlinck.

* * * * *